



Forty years experience, leader in the production of traditional woodworking machines. The production is managed internally, allowing to run every type of work, from the machines in series to the customized ones. The supervising of each step guarantees the good functioning of machines and all details are well cared.

CMA 72

QUALITY WITHOUT COMPROMISES



CMA 72



THE MOST STURDY ON THE MARKET, COMFORTABLE AND POWERFUL, THANKS TO THE ROBUST HEAD AND THE GREAT SCREEN GUIDES THAT ARE MADE IN CAST IRON AND STEEL. THE RETURN OF THE BELT ALLOWS A VERY HIGH ROTATION OF THE TOOL.



TILTING TABLE

The revolving fence (goniometer) on the table - 45° / + 45° allows to perform any kind of work in full comfort and safety.



WESTCOTT UNIVERSAL 0 - 20 mm

PLANE OF LARGE DIMENSIONS

The large plane allows a comfortable support of the piece to be worked; it's equipped with adjustable telescopic stop.



LIFTING THE HOB

The lifting of the hob through the handwheel is light and precise, thanks to the self-leveling bearings on which the gears are fixed.

PEDAL POCKET LOCKING

The pneumatic clamping of the pedal makes the loading and unloading of the pieces convenient and quick, ensuring an optimal fixing during the processing.



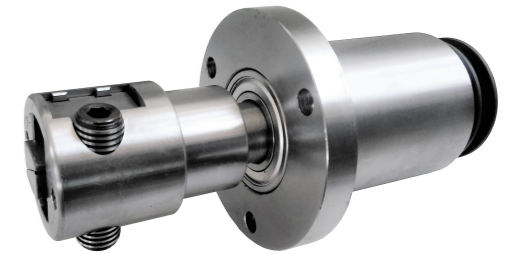
PREPARED FOR BITS WITH SQUARE BORE (OBLIGATION OF LEVER AND RACK DEVICE)

TWO MOVEMENT LEVERS

The two movement levers guarantee the absence of vibrations (typical of the single lever machines, instead) as well as a complete control of the movements during the processing.

SPINDLE SUPPORT

The large spindle support with sealed bearings for high speed, allows workings on large diameters.



TWO-SPEED MOTOR

The two-speed motor (spindle 2250/4500 rpm) makes every type of possible working, from the one with smallest tool to the most heavy one with large dimension tools.

ROTATING SQUARE ON WORK SURFACE +45° / - 45°



TECHNICAL DATA

CMA72

ON DEMAND

BIT MORTISING MACHINE			
PLANE DIMENSION	mm	600 X 300	Tilting table 45° (right-left)
SPINDLE SPEED	g/1'	4500	Pneumatic wood press with pedal control
WESCOTT SPINDLE	mm	0 - 20	Double pneumatic wood press with pedal control
MOTOR POWER	KW.	2,2 (HP 3)	Double rapid mechanic wood press
TRANSVERSAL RUN	mm	250	Rapid pneumatic wood press
LONGITUDINAL RUN	mm	170	Motor protection with release coil and emergency button
VERTICAL RUN	mm	170	2-speed motor (1400 - 2800) 1,7 - 2,4 HP
OVERALL DIMENSIONS	mm	1100 X 750 X 1000	2-speed motor (2250 - 4500) 1,7 - 2,4 HP
NET WEIGHT	Kg	230	Rotating square on work surface +45°/ - 45°
			Inverter with adjustment from 1300 to 4300 rpm
			Lever and rack device
			Prepared for bits with square bore (obligation of lever and rack device)
The manufacturer reserves the right to make any technical or constructional modifications.			



C.M.A. 2000 S.r.l.

Via Cesare Pavese, 22 - 47853 Cerasolo Ausa Coriano (RN)

Tel. e Fax: +39 0541 759315

info@cma2000srl.com

commerciale@cma2000srl.com

assistenza@cma2000srl.com

www.cma2000srl.com

P.IVA 03124370408



CMA 2000



CMA 2000 srl



CMA 2000

